

12180 Laptop Stand

- Stable, fast and practical
- Provides 5 positions
- Collapsible into a small format
- With support arms for a "second device"

SAFETY NOTES

- Be sure that the surface is suitable and level
- Place the laptop so that it is snug up against the front stops
- Both support arms must be in the same position i.e. placed at the same angle (refer to C.3)
- Ensure the screws are properly tightened.

SET UP INSTRUCTIONS

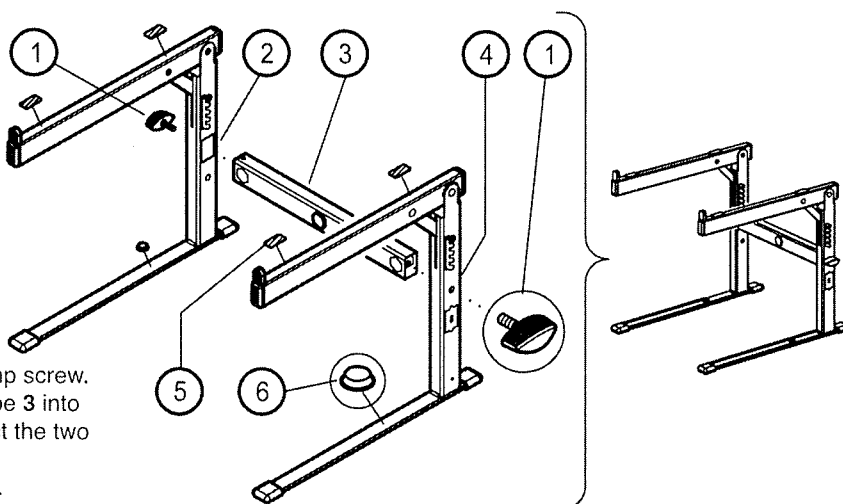
SETUP

A. Assembly the base frame

- First place the connection tube 3 into the side piece 4 and connect the two with the clamp screw.
- Then place the other end of the connection tube 3 into the slot of the second side piece 2 and connect the two with the clamp screw 1.
- Disassembly is performed in the reverse order.

B. Placement of the rubber caps

- There are four rubber strips 5 which are to be adhered to the adjustable support arms as shown in the instructions
- Rubber pads 6 can be placed on the stand feet to ensure that the second device is protected



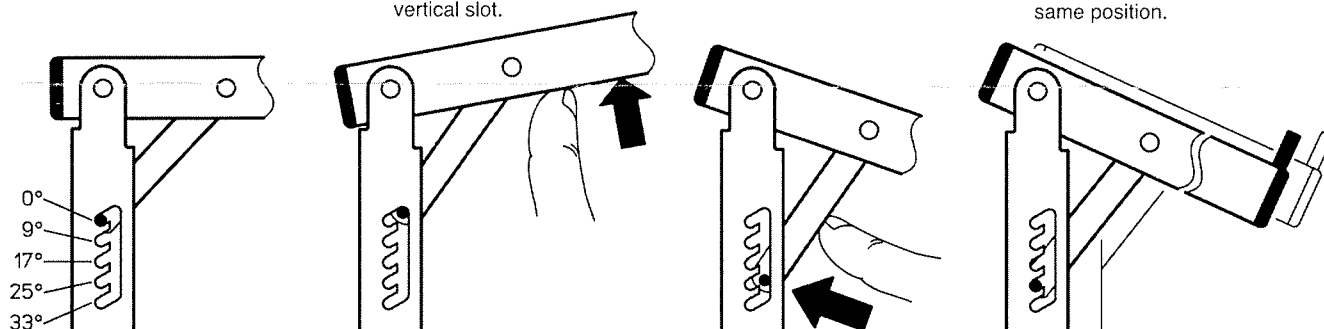
Adjusting the Angle

C. Angle - even, 9°, 17°, 25° and 33°

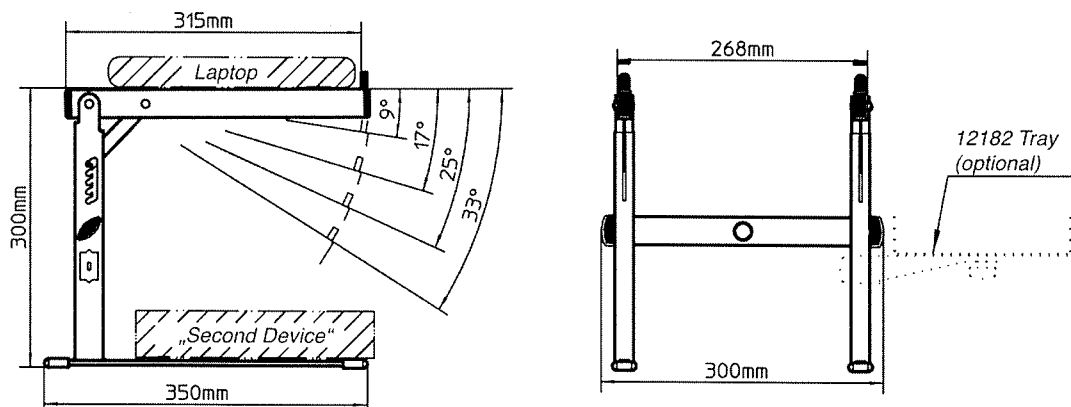
C.1 Lift up the support arm until the bolt clicks into the vertical slot.

C.2 Place the bolt into the desired vertical slot.

C.3 Place the second support arm in the same position.



DIMENSIONS



TECHNICAL DATA

Material	Tube, foot struts: steel, black powder coating Caps, grips, feet: PA, PE, TPE Threads, bolts, struts: steel, galvanized, nickel plated	Dimensions, weight	max. W x D x H: 300 x 350 x 300 mm, 2.1 kg
		Box	W x D x H: 440 x 370 x 35 mm; 2.4 kg
		Accessories (not include)	Tray 12182-000-55
Load	Laptops, Notebooks		